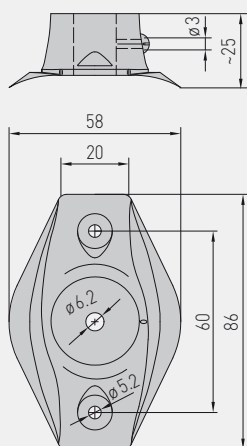
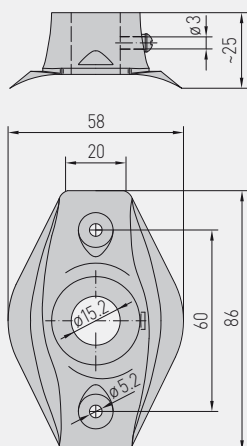
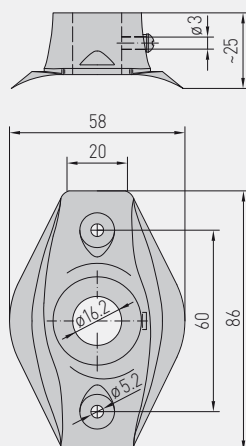
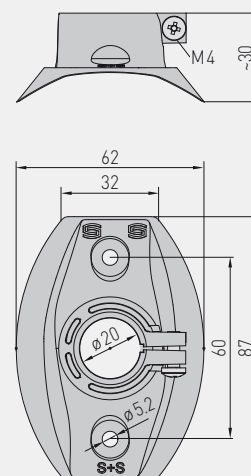


Mounting flange, plastic

Dimensional drawing **MF-06-K**Dimensional drawing **MF-15-K**Dimensional drawing **MF-16-K**Dimensional drawing **MFT-20-K****MF-06-K**Mounting flange,
plastic**MF-15-K**Mounting flange,
plastic**MF-16-K**Mounting flange,
plastic**MFT-20-K**Mounting flange,
plastic

Type / WG01	Mounting flange, plastic	Tube Gland	T _{max}	Item No.	Price
MF-K	for metal protective tubes!				
MF-06-K	Mounting flange, plastic, approx. 58 x 86 x 25 mm for mean value temperature sensors MWTF and mean value temperature measuring transducers MWTFM	Ø 6.2 mm	+100 °C	7100-0030-1000-000	5,16 €
MF-14-K	Mounting flange, plastic, approx. 58 x 86 x 25 mm for duct humidity sensors KFF / KFTF and pendulum room humidity sensors RPFF / RPFTF as well as for duct air flow monitors KLG / KLSW	Ø 14.2 mm	+100 °C	7100-0030-2000-000	8,06 €
MF-15-K	Mounting flange, plastic, approx. 58 x 86 x 25 mm for temperature sensors TF (series Tyr 1) and temperature measuring transducers TM (series Tyr 1)	Ø 15.2 mm	+100 °C	7100-0032-0000-000	5,16 €
MF-16-K	Mounting flange, plastic, approx. 58 x 86 x 25 mm for duct air quality sensors KLQ	Ø 16.2 mm	+100 °C	7100-0030-0000-000	8,06 €
MF-20-K	Mounting flange, plastic, approx. 58 x 86 x 25 mm for duct sensors KCO ₂ , KLQ - CO ₂ , KH	Ø 20.2 mm	+100 °C	7100-0030-4000-000	8,06 €
MFT-K	for PLEUROFORM multi-channel pipes!				
MFT-20-K	Mounting flange, plastic, approx. 62 x 87 x 30 mm for duct sensors (series Tyr 2)	Ø 20 mm	+100 °C	7000-0031-0000-000	8,06 €

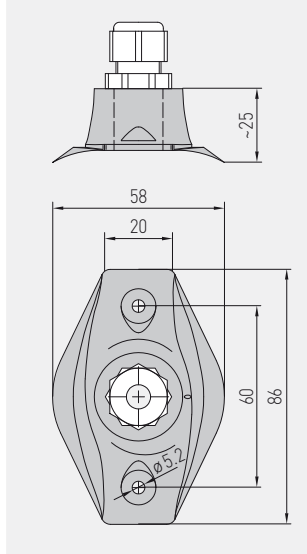


S+S REGELTECHNIK

Accessories

Mounting flange, metal
Capillary tube gland bracket, plastic
Immersion sleeve adapter, metal

Dimensional drawing **KRD-04**

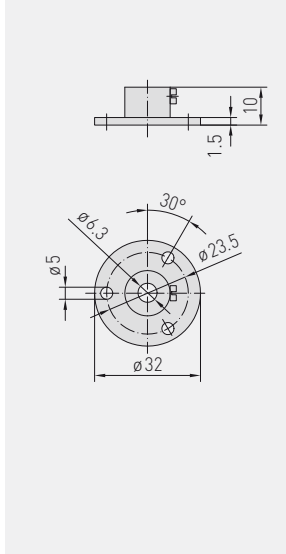


KRD-04

Capillary tube gland bracket, plastic



Dimensional drawing **MF-06-M**

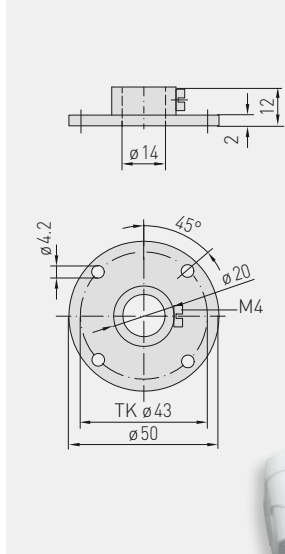


MF-06-M

Mounting flange, metal



Dimensional drawing **MF-14-M**

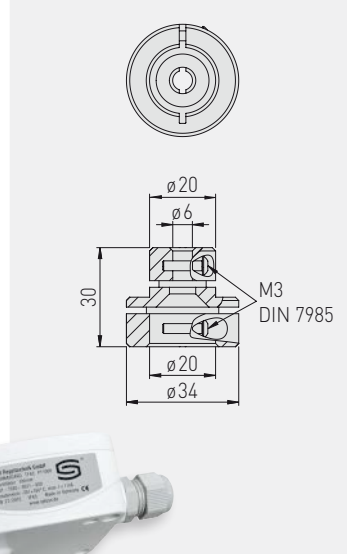


MF-14-M

Mounting flange, metal



Dimensional drawing **TH-ADAPTER-HW**



TH-ADAPTER-HW

Immersion sleeve adapter, metal



Type / WG01	Mounting flange, metal	Tube Gland	T _{max}	Item No.	Price
MF-M	for metal protective tubes!				
MF-06-M	Mounting flange, metal (galvanised steel), Ø 32 mm, for temperature sensors TF (form B) and temperature measuring transducers TM (form B) as well as for mean value temperature sensors MWTF and mean value temperature measuring transducers MWTM	Ø 6,3 mm	+700 °C	7100-0030-5000-000	8,06 €
MF-14-M	Mounting flange, metal (galvanised steel), Ø 50 mm, for duct humidity sensors KFF / KFTF and pendulum room humidity sensors RPFF / RPFTF	Ø 14,0 mm	+700 °C	7100-0030-6000-000	26,61 €

Type / WG01	apillary tube gland bracket, plastic	Item No.	Price
KRD-04	Capillary tube gland bracket, plastic, approx. 58 x 86 x 25 mm (M 16 x 1.5) for frost protection thermostats (e.g. for air ducts) as well as for mean value temperature sensors MWTF and mean value temperature measuring transducers MWTM	7100-0030-7000-000	7,52 €

Type / WG01	Immersion sleeve adapter, metal	Item No.	Price
TH-ADAPTER-HW	Metal immersion sleeve adapter (adaptation Ø 20 mm / Ø 6 mm) for mounting S+S temperature sensors from the TF and TM series in immersion sleeves by Honeywell / Centraline of the types VFFT, VFL, VFNT, VFLN	7100-0037-0001-000	13,06 €