

Multifunctional duct sensors and measuring transducers
for humidity, temperature, pressure, differential pressure and volume flow,
incl. mounting flange and connection set,
calibratable, with Modbus connection

Maintenance-free microprocessor-controlled **PREMASGARD® 814x-Modbus** (Series) with Modbus connection, in an impact-resistant plastic housing with quick-locking screws, optionally with /without display, with a plastic sinter filter (exchangeable), to exactly detect the relative humidity (0...100% r.H.) and the temperature (-35...+80 °C) in ducts and to measure the differential pressure (max. -7000...7000 Pa) in air. Incl. mounting flange and connection set **ASD-06** (2m connecting hose, two pressure port nipples, screws).

The pressure sensor is applied to measure positive, negative or differential pressure in clean air and gaseous media. It is used in the clean room, medical and filter technology, ventilation and air conditioning ducts, spray booths, large-scale catering facilities, for filter monitoring and level measurement or for triggering frequency converters.

A long-term stable, **digital humidity and temperature sensor** and a **pressure sensor** with piezoresistive measuring element guarantee exact measurement results. These measurands are used to internally calculate the following parameters that can be retrieved via Modbus: temperature [°C], relative humidity [% r. H.], dew point [°C], absolute humidity [g/m³], mixture ratio [g/kg], enthalpy [kJ/kg] (ignoring atmospheric air pressure), differential pressure [Pa], volume flow [m³/h], air density [kg/m³].

Innovative Modbus sensor with galvanically separated RS485-Modbus-interface, selectable bus termination resistance, DIP switch for setting the bus parameters and bus address in current-free state, LEDs for telegram status display, two separate push-in terminals and large three-line display (illuminated; with customised programming in the 7-segment and dot-matrix range). The sensor is factory-calibrated; an environmental precision adjustment by an expert is possible.

PREMASGARD® 814x-Modbus
 with plastic sinter filter
 (standard)



TECHNICAL DATA

Power supply:	24 V AC (± 20 %) and 15...36 V DC
Power consumption:	< 4.8 W / 24 V DC typical; < 6.8 VA / 24 V AC typical; peak current 200 mA
Data points:	differential pressure [Pa], temperature [°C], relative humidity [% r.h.], dew point [°C], absolute humidity [g/m³], mixing ratio [g/kg], enthalpy [kJ/kg], volume flow [m³/h], air density [kg/m³]

HUMIDITY

Sensors:	digital humidity sensor with integrated temperature sensor, low hysteresis, high long-term stability
Sensor protection:	plastic sinter filter, Ø 16 mm, L = 35 mm, exchangeable (optional metal sinter filter, Ø 16 mm, L = 32 mm)
Measuring range, humidity:	0...100 % r. H.
Operating range, humidity:	0...95 % r. H. (without dew formation)
Deviation in humidity:	typically ± 2.0 % (20...80 % r. H.) at +25 °C, otherwise ± 3.0 %

TEMPERATURE

Measuring range, temperature:	-35...+80 °C
Deviation in temperature:	typically ± 0.2 K at +25 °C

PRESSURE

Type of pressure:	differential pressure
Pressure connection:	with metal connection nozzles for pressure hose Ø 6 mm (optional on request with quick connect for PVC fabric pressure hose Ø 6 mm)
Measuring range, pressure:	-500... +500 Pa or -7000...+7000 Pa depending on the type of device, see table

Accuracy, pressure:	Type 8148 (500 Pa): typically ± 3 Pa at +25 °C Type 8147 (7000 Pa): typically ± 35 Pa at +25 °C compared to the calibrated reference device
---------------------	--

Above- / below-pressure:	max. ± 50 kPa
Zero point offset:	± 10 % of final value
Medium:	clean air and non-aggressive, non-combustible gases
Media contacting parts:	Brass, Ni, thermoset plastic, Si, epoxy, RTV, BSG, UV silicone gel
Media temperature:	-20...+50 °C (temperature-compensated 0...+50 °C)
Hysteresis:	0.3 % of final value
Linearity:	< ± 1 % of final value
Temp. drift values:	± 0.1 % / °C
Long-term stability:	± 1 % per year

Display screen (cyclic/static) **Modbus Tyr 2**



Pressure



Temperature



Humidity



Volume flow rate

Programmable display screen **Modbus Tyr 2**

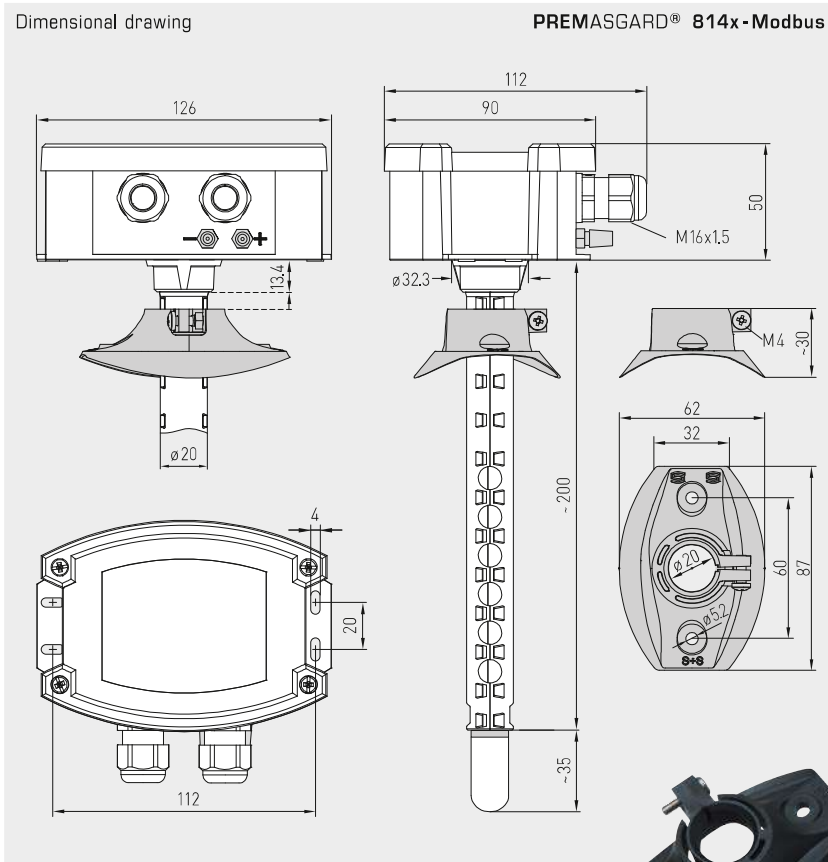


Continued on next page!



S+S REGELTECHNIK

Multifunctional duct sensors and measuring transducers for humidity, temperature, pressure, differential pressure and volume flow, incl. mounting flange and connection set, calibratable, with Modbus connection



MFT-20-K
Mounting flange,
plastic



PREMAGARD® 814x-Modbus
with display and
plastic sinter filter
(standard)



Device version
with M12 connector
(optional on request)



TECHNICAL DATA (continued)

Bus protocol:	Modbus (RTU mode), address range 0...247 adjustable
Signal filtering:	4 s / 32 s at temperature / humidity 0 s / 1 s / 10 s at pressure
Ambient temperature:	-30...+70 °C
Electrical connection:	0.2 - 1.5 mm ² , via push-in terminal
Housing:	plastic, UV-stabilised, material polyamide, 30% glass-globe reinforced, with quick-locking screws (slotted / Phillips head combination), colour traffic white (similar to RAL 9016), housing cover for display is transparent!
Housing dimensions:	126 x 90 x 50 mm (Tyr 2)
Cable connection:	cable gland , plastic (M 16 x 1.5; with strain relief, exchangeable, max. inner diameter 10.4 mm) or M12 connector according to DIN EN 61076-2-101 (optional on request)
Protective tube:	PLEUROFORM™ , material: polyamide (PA6), with torsion protection, v _{max} = 30 m/s (air), Ø 20 mm, (on request, optional stainless steel V2A (1.4301), Ø 16 mm) with plastic sinter filter: NL = 235 mm (optional with metal sinter filter: NL = 227 mm)
Process connection:	via mounting flange made of plastic (included in the scope of delivery)
Protection class:	III (according to EN 60 730)
Protection type:	IP 65 (according to EN 60 529) housing only! (PLEUROFORM IP 30)
Standards:	CE-conformity, electromagnetic compatibility according to EN 61 326, EMC Directive 2014 / 30 / EU
Optional:	three-line display with illumination , programmable, cut-out approx. 70 x 40 mm (W x H), for display actual humidity, actual temperature and ACTUAL pressure (cyclic) or a selectable parameter (static) or an individually programmable display value (The Modbus interface allows the display to be individually configured in the 7-segment area and in the dot-matrix area.)

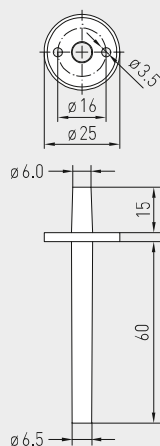
ACCESSORIES	see table
ASD-06	Connection set (nipple straight) – (included in the scope of delivery)
MFT-20K	Mounting flange plastic (included in the scope of delivery)

Multifunctional duct sensors and measuring transducers
for humidity, temperature, pressure, differential pressure and volume flow,
incl. mounting flange and connection set,
calibratable, with Modbus connection

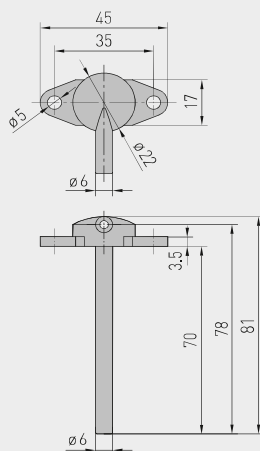


S+S REGELTECHNIK

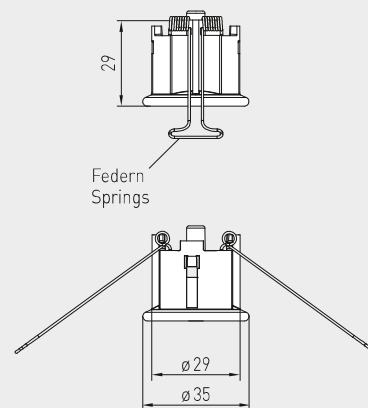
Dimensional drawing **ASD-06**
Connection set



Dimensional drawing **ASD-07**
Connection nipple



Dimensional drawing **DAL-01**
Pressure outlet



ASD-06
Connection set



ASD-07
Connection nipple

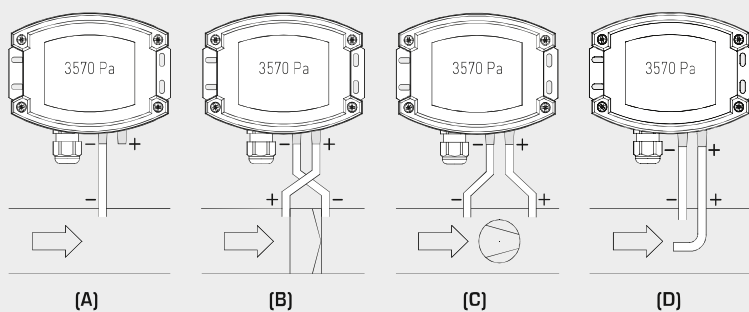


DAL-01
Pressure outlet



Mounting diagram

PREMASGARD® 814x-Modbus



TYPES OF MONITORING:

Pressure connections at the pressure switch are marked with P1 (+) for higher pressure and P2 (-) for lower pressure.

(A) Below-atmospheric pressure

P1 (+) is not connected, but open to the atmosphere
P2 (-) connected to inside of duct

(B) Filter

P1 (+) connected upstream of filter
P2 (-) connected downstream of filter

(C) Ventilator

P1 (+) connected downstream of ventilator
P2 (-) connected upstream of ventilator

(D) Volume flow

P1 (+) dynamic pressure, connected in flow direction
P2 (-) static pressure, connected free of dynamic pressure components

Conversion table for pressure values:

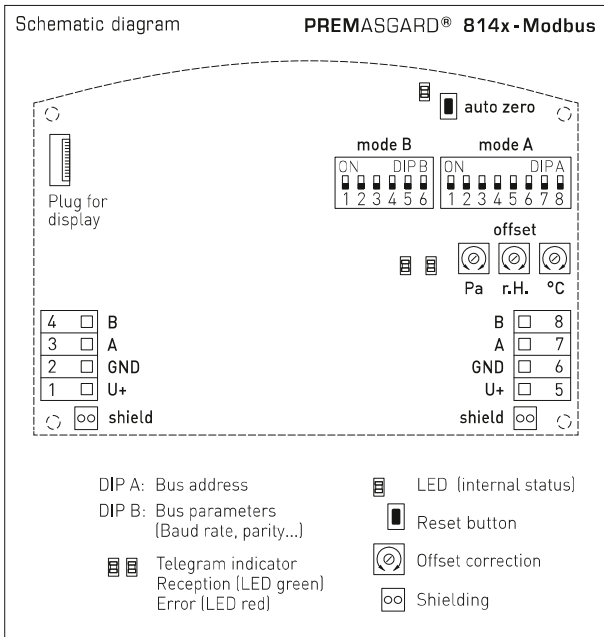
Unit =	bar	mbar	Pa	kPa	mH ₂ O
1 Pa	0.00001 bar	0.01 mbar	1 Pa	0.001 kPa	0.000101971 mH ₂ O
1 kPa	0.01 bar	10 mbar	1000 Pa	1 kPa	0.101971 mH ₂ O
1 bar	1 bar	1000 mbar	100000 Pa	100 kPa	10.1971 mH ₂ O
1 mbar	0.001 bar	1 mbar	100 Pa	0.1 kPa	0.0101971 mH ₂ O
1 mH ₂ O	0.0980665 bar	98.0665 mbar	9806.65 Pa	9.80665 kPa	1 mH ₂ O



S+S REGELTECHNIK

PREMASGARD® 814x-Modbus

Multifunctional duct sensors and measuring transducers for humidity, temperature, pressure, differential pressure and volume flow, incl. mounting flange and connection set, calibratable, with Modbus connection



PREMASGARD® 814x-Modbus with display



SF-K
Plastic sinter filter (standard)



SF-M
Metal sinter filter (optional)
stainless steel protective tube (optional on request)

PREMASGARD® 814x-Modbus Multifunctional duct sensor for humidity, temperature, pressure, differential pressure and volume flow rate, *Deluxe*

Type / WG02	Measuring ranges	Humidity	Temperature	Output	Display	Item no.
PREMASGARD® 8148-Modbus	- 500...+ 500 Pa					
PREMASGARD 8148-M	-500...+ 500 Pa	0...100%r.H.	-35...+80°C	Modbus		1301-8144-0910-20V
PREMASGARD 8148-M LCD	-500...+ 500 Pa	0...100%r.H.	-35...+80°C	Modbus	■	1301-8144-4910-20V
Equipped as standard with automatic zero point calibration						
PREMASGARD® 8147-Modbus	- 7000...+ 7000 Pa					
PREMASGARD 8147-M	-7000...+ 7000 Pa	0...100%r.H.	-35...+80°C	Modbus		1301-8144-0950-200
PREMASGARD 8147-M LCD	-7000...+ 7000 Pa	0...100%r.H.	-35...+80°C	Modbus	■	1301-8144-4950-200
Extra charge: with optional automatic zero point calibration (please specify in your order)						
Optional:	Cable connection with M12 connector according to DIN EN 61076-2-101					on request

ACCESSORIES

KA2-Modbus	Communication adapter (USB/RS485) for system connection	1906-1200-0000-100
LA-Modbus	Line termination device (with terminating resistor) as an active bus termination	1906-1300-0000-100
ASD-06	Connection set (included in the scope of delivery) consisting of 2 connection nipples (straight) made of ABS, 2 m PVC hose, soft, and 4 tapping screws	7100-0060-3000-000
ASD-07	2 connection nipples (at 90° angle) made of ABS	7100-0060-7000-000
DAL-01	Pressure outlet for ceiling or in-wall installation (e.g. in clean rooms)	7300-0060-3000-001
SF-M	Metal sinter filter, Ø 16 mm, L = 32 mm, exchangeable, stainless steel V4A (1.4404)	7000-0050-2200-100
MFT-20-K	Mounting flange , plastic (included in the scope of delivery)	7000-0031-0000-000

For further information see last chapter!