

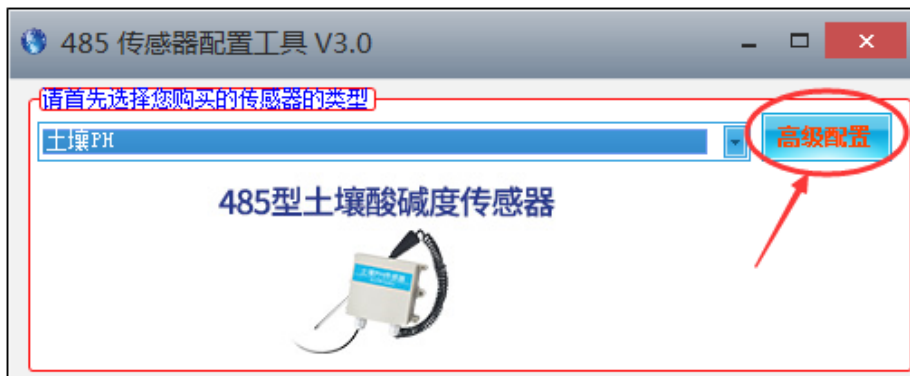
How to use RS485 software

I. Connect RS485 sensors to Computer with RS485/USB interface

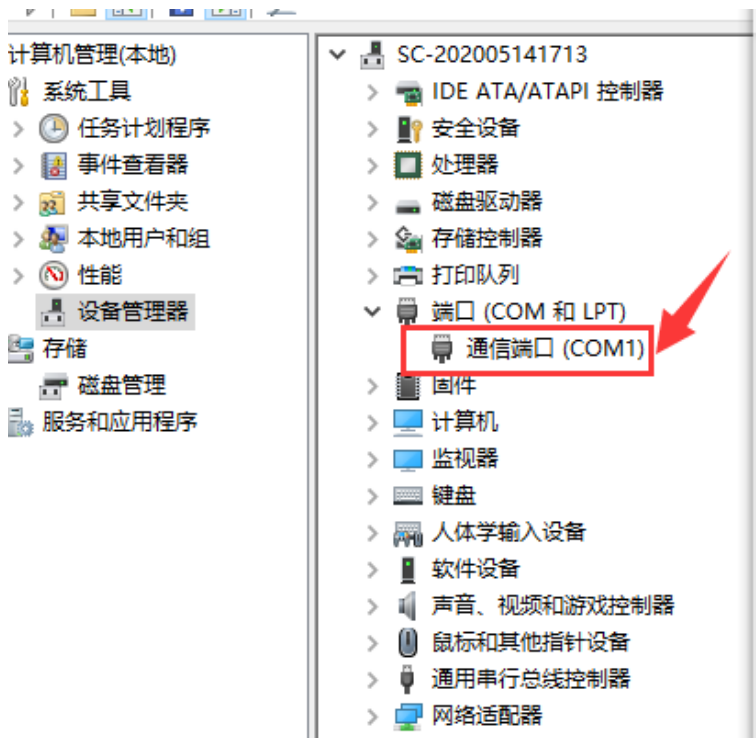
II. Install “Driver” in user computer.

III. Operation Steps on RS485 software

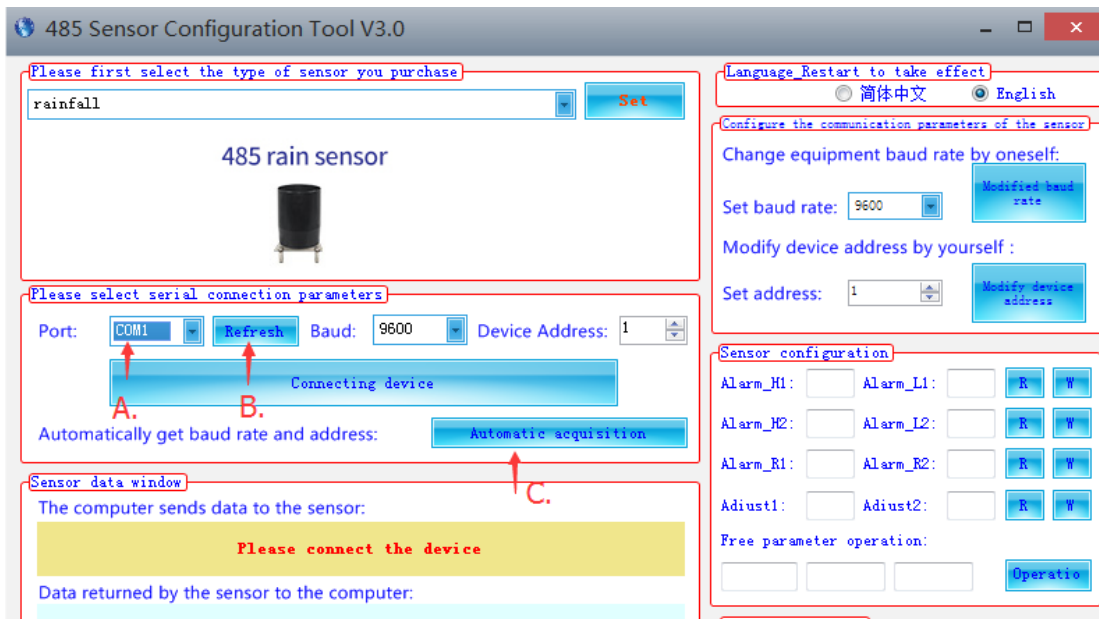
1. Click and open the software
2. Click “高级设置” at right top of the page and change language to English



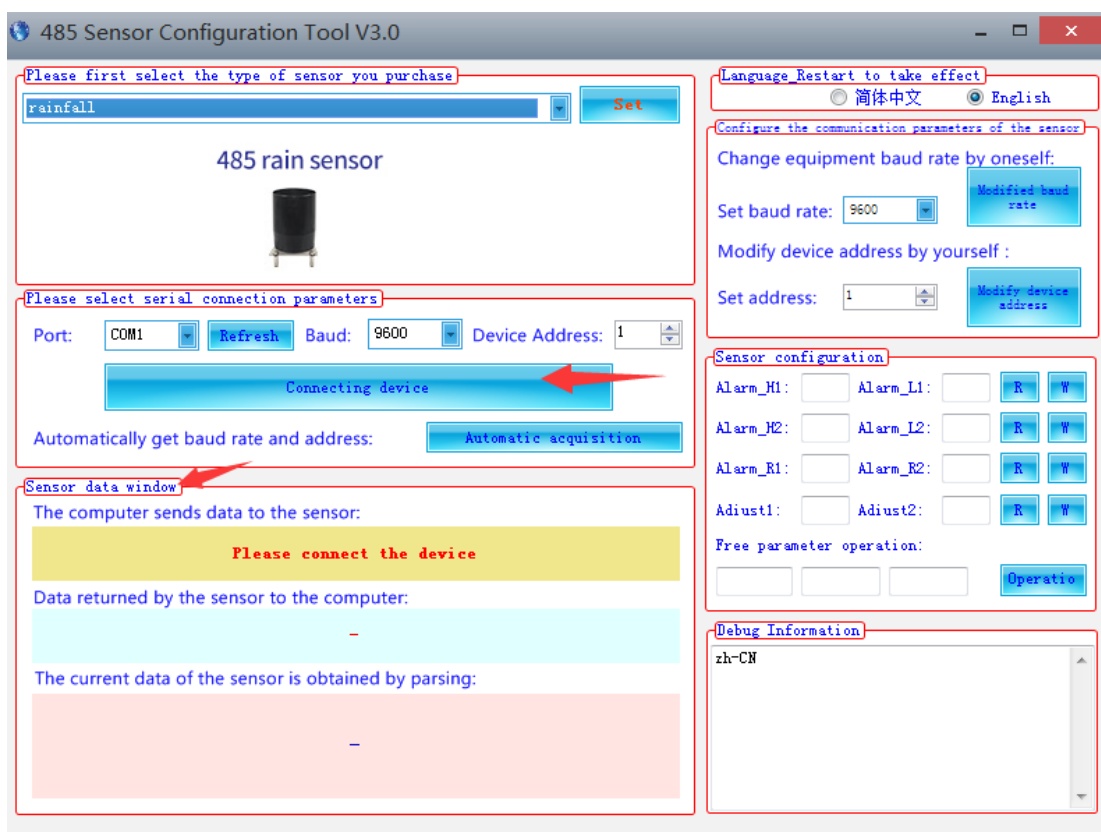
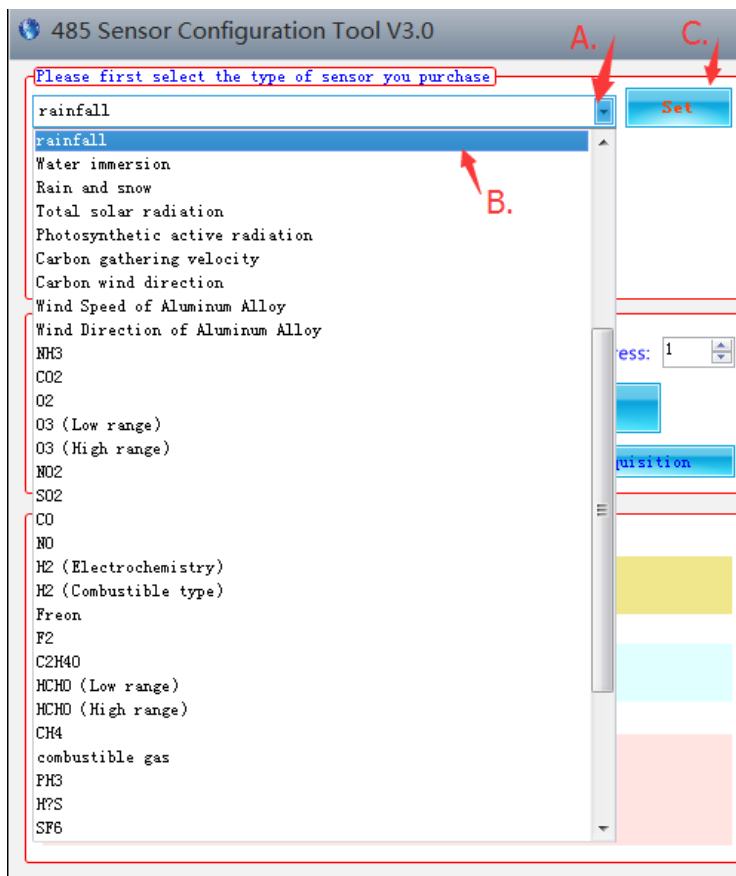
3. Right click on the computer to open the “device manager”,
Select the port at the port “COM #”



4. Per below Picture: Put the “COM #” into A, and click B to refresh, then click C.



5. Per below picture: Select Product Name in the list below by A to B and click C to set, and then click “connecting device”.



6. Then if the sensor is well connected, user can see data status on “Sensor data window”